

\* Provincial Sensitive Ecosystems Inventory (SEI) has been conducted for the Nanaimo Area Lowland Ecoregion - the narrow coastal plain on the eastern coast of Vancouver Island. Only ecosystems larger than 0.5 hectare in size were identified using 1:8,000-1:20,000 air photos. Certain ecosystems are very difficult to identify from air photos and these may have been missed by the assessment.

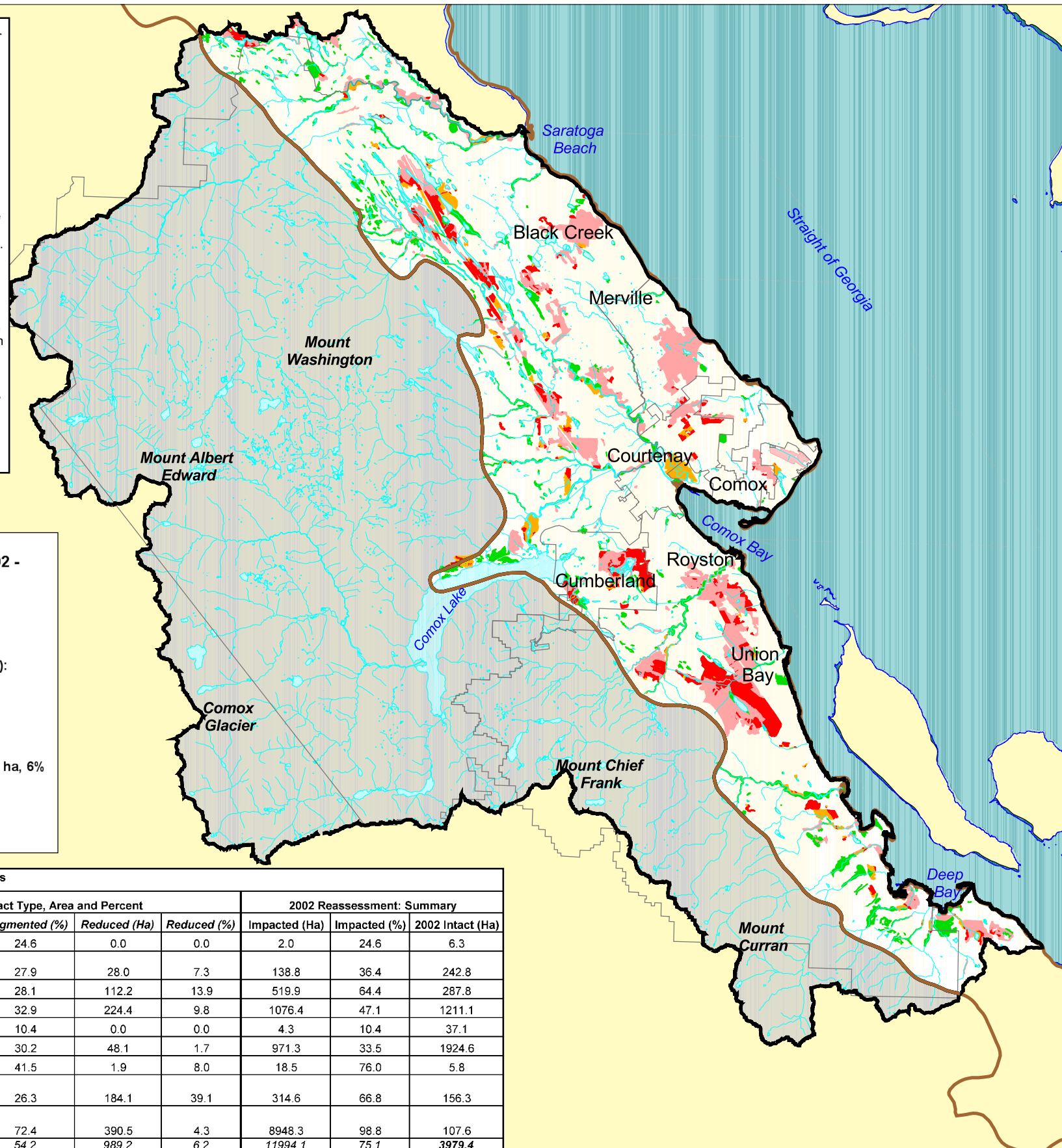
This map shows the loss, reduction and fragmentation of sensitive ecosystems within the Comox Valley's lowland areas over approximately 10 years (from 1991 to 2002), as recorded by the SEI.

The ecosystems inventoried include those considered to be rare and threatened (Wetland, Riparian, Old Growth Forest, Terrestrial Herbaceous, Woodland, Coastal Bluff and Sparsely Vegetated) and those considered to be highly valuable for biodiversity although modified (Seasonally Flooded Agricultural Fields and Older Second Growth Forest).

Although there is no formal inventory from the past, the seven 'rare and threatened' ecosystem types likely covered vast areas of the Comox Valley and eastern Vancouver Island.

The province has no sensitive ecosystems records for the upper elevation zone (called the Leeward Island Mountain Ecoregion) which extends from the edge of the coastal plain to the height of land in the Beaufort and Vancouver Island Mountains.

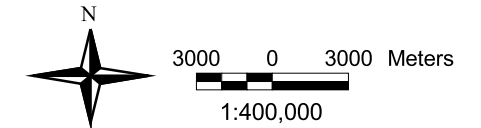
For more information on Sensitive Ecosystem Loss refer to the June 2005 report: 'Redigitizing of Sensitive Ecosystems Inventory Polygons to Exclude Disturbed Areas' published by Environment Canada (Canadian Wildlife Service). The report can be accessed by following this link: [http://srmwww.gov.bc.ca/appsdata/acat/html/deploy/acat\\_p\\_report\\_2124.html](http://srmwww.gov.bc.ca/appsdata/acat/html/deploy/acat_p_report_2124.html).



## Comox Valley's Disappearing Sensitive Ecosystems



Comox Valley Land Trust

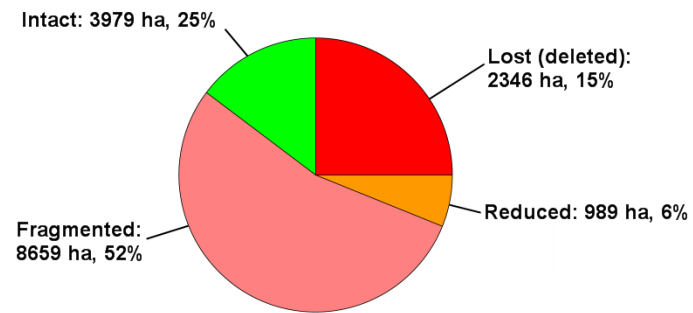


**Reference Map:** 92F 14,15, 11, 10, 6, 7 (NTS 1:50,000)  
**Map Datum:** NAD 83  
**UTM Zone:** UTM 10  
**Drafted by:** Comox Valley Land Trust  
**Date:** May 15 2008

- Regional Conservation Strategy (RCS) Project Area - Nanaimo Area Lowland Ecoregion
  - RCS Project Area - Leeward Island Mountain Ecoregion
  - Ecoregion Boundary
  - Municipal and Regional Government Boundaries
  - 1:50,000 Watercourses (BC Watershed Atlas)
  - Lakes
  - Ocean
- SENSITIVE ECOSYSTEMS INVENTORY: 1991-2002**
- Lost Ecosystems
  - Fragmented Ecosystems
  - Reduced Ecosystems
  - Intact Ecosystems

### Sensitive Ecosystems Inventory Reassessment 2002 - Comox Valley Statistics

Total Area Assessed: 15,794 ha



#### Sensitive Ecosystem Inventory Reassessment 2002 - Comox Valley Statistics

Primary Ecosystem	1997 Intact (Ha)	2002 Reassessment: Impact Type, Area and Percent						2002 Reassessment: Summary		
		Lost (Ha)	Lost (%)	Fragmented (Ha)	Fragmented (%)	Reduced (Ha)	Reduced (%)	Impacted (Ha)	Impacted (%)	2002 Intact (Ha)
Coastal Bluff	8.3	0.0	0.0	2.0	24.6	0.0	0.0	2.0	24.6	6.3
Terrestrial Herbaceous	381.6	4.4	1.1	106.4	27.9	28.0	7.3	138.8	36.4	242.8
Older Forest	807.7	180.7	22.4	227.0	28.1	112.2	13.9	519.9	64.4	287.8
Riparian	2287.6	100.2	4.4	751.9	32.9	224.4	9.8	1076.4	47.1	1211.1
Sparsely Vegetated	41.4	0.0	0.0	4.3	10.4	0.0	0.0	4.3	10.4	37.1
Wetland	2895.9	48.0	1.7	875.2	30.2	48.1	1.7	971.3	33.5	1924.6
Woodland	24.3	6.5	26.5	10.1	41.5	1.9	8.0	18.5	76.0	5.8
Seasonally Flooded Agricultural Fields	470.9	6.5	1.4	124	26.3	184.1	39.1	314.6	66.8	156.3
Older Second Growth Forest	9055.9	2000.1	22.1	6557.7	72.4	390.5	4.3	8948.3	98.8	107.6
<b>TOTALS</b>	<b>15973.6</b>	<b>2346.4</b>	<b>14.7</b>	<b>8658.6</b>	<b>54.2</b>	<b>989.2</b>	<b>6.2</b>	<b>11994.1</b>	<b>75.1</b>	<b>3979.4</b>

This map was created by the Comox Valley Land Trust (CV Land Trust) using digital files from the Comox-Strathcona Regional District, Comox Valley Project Watershed Society and the Province of British Columbia. The Regional Conservation Strategy Project Area was delineated using the BC TRIM Watershed Atlas - Comox and Parksville Watershed Groups - Watershed Boundary layer, from Cook Creek to the Oyster River.

The data is of varying age and accuracy and although it has been quality checked by the CV Land Trust, the organization disclaims all responsibility for the accuracy or completeness of the information. The intent of this map is to provide information for educational purposes and not for legal purposes.

Contact the BC Ministry of Environment Conservation Data Centre or Environment Canada's Canadian Wildlife Service for more information about the Sensitive Ecosystems Inventory.

